

TOSHIBA

Cloud Print Management

e-FOLLOW.cloud



Feature-rich Cloud Print Management for Flexible Working

The cloud has become an essential tool for businesses of all sizes. Increasingly companies are developing cloud strategies as it offers a flexible and scalable way to store data, run applications and provide employees with remote access to corporate resources.

However, many businesses still design their printing infrastructure based on an on-premise print server architecture. This means that the printing infrastructure still requires investments, is expensive and time-consuming to maintain.

Businesses who have already transferred fundamental IT applications and infrastructure to the cloud may want to add printing to their Software as a Service (SaaS) portfolio and use e-FOLLOW.cloud. Moving your printing infrastructure for your Toshiba multifunctional printers (MFPs) to the cloud, will provide you with additional flexibility and security, while also reducing cost.

Provides greater flexibility for distributed teams

The explosion in distributed teams has created a need for greater flexibility in how documents are printed, with mobile printing now an essential requirement for many workers.

Users want to be able to print from any location whether they are in the office, at home, or out on the road.

While the work environment may be evolving into something less formal, businesses still need to be able to centrally manage and monitor all print activity, no matter where users are located.



Remote printing from any device

Toshiba's print management solution e-FOLLOW.cloud, connects your Toshiba MFPs to a cloud-based server. This server then acts as an intermediary between your printer and any internet-connected device that needs to print. When you want to print something, the document is sent directly from your device to the server, making it easy to pull it from any MFP. This enables users to print documents from anywhere, on any device, as long as they have an internet connection.

Jobs can be printed from any terminal device and securely transmitted directly to the e-FOLLOW.cloud via an encrypted IPPS connection. e-FOLLOW.cloud also offers the following options for securely transferring documents to the cloud:

- Authenticate users at a Toshiba MFP with ID cards, PINs or username and passwords
- Apply permissions to control user functionality
- Assign and monitor user print quotas
- Users can see all of their available print jobs and select any to be pulled down and released as a job for the print device
- Costs for different functions such as copying and printing can be assigned to defined projects and cost centres
- Create duplicates or print outs of documents as required



Further Benefits of a Cloud-based Print Management Solution

Serverless

e-BRIDGE and selected A4 multifunctional devices are connected to the e-FOLLOW.cloud without the need of any local servers, making it easy to get started and easy to maintain.

Data security

Due to the design of e-FOLLOW.cloud, all customer data is always encrypted when transmitted or stored. This ensures the highest level of data security and exceeds applicable standards. Pull printing prevents documents from being printed and left unsecured in the output tray.

Scalability

e-FOLLOW.cloud is self-scaling, making it suitable for small organisations with only a few devices up to enterprises with an unlimited number of users, locations and MFPs.



Do you need to scan to the cloud too?

Enhance your MFPs even more with Toshiba's optional e-BRIDGE Plus apps and further increase your efficiency. Instantly connect to all popular cloud services, automate processes or just add new productive features.

The e-BRIDGE Plus apps make your Toshiba systems even more future-proof.

Reduce costs and required resources

e-FOLLOW.cloud replaces all local print servers. Everything is managed remotely in the cloud. This means there are no costs for the acquisition and operation of server hardware, its maintenance and administration.

End-to-end encryption

All communication channels and data transfers are consistently encrypted end-to-end, guaranteeing maximum security for your user, billing and print data. This makes it much easier to control all print activity, ensuring that sensitive documents are not left unsecured on print devices.

Greater flexibility

Whether users send their print jobs from their local workstations, from their home office or from their mobile devices, they'll be able to collect their print jobs when they're next at any app-enabled Toshiba MFP.

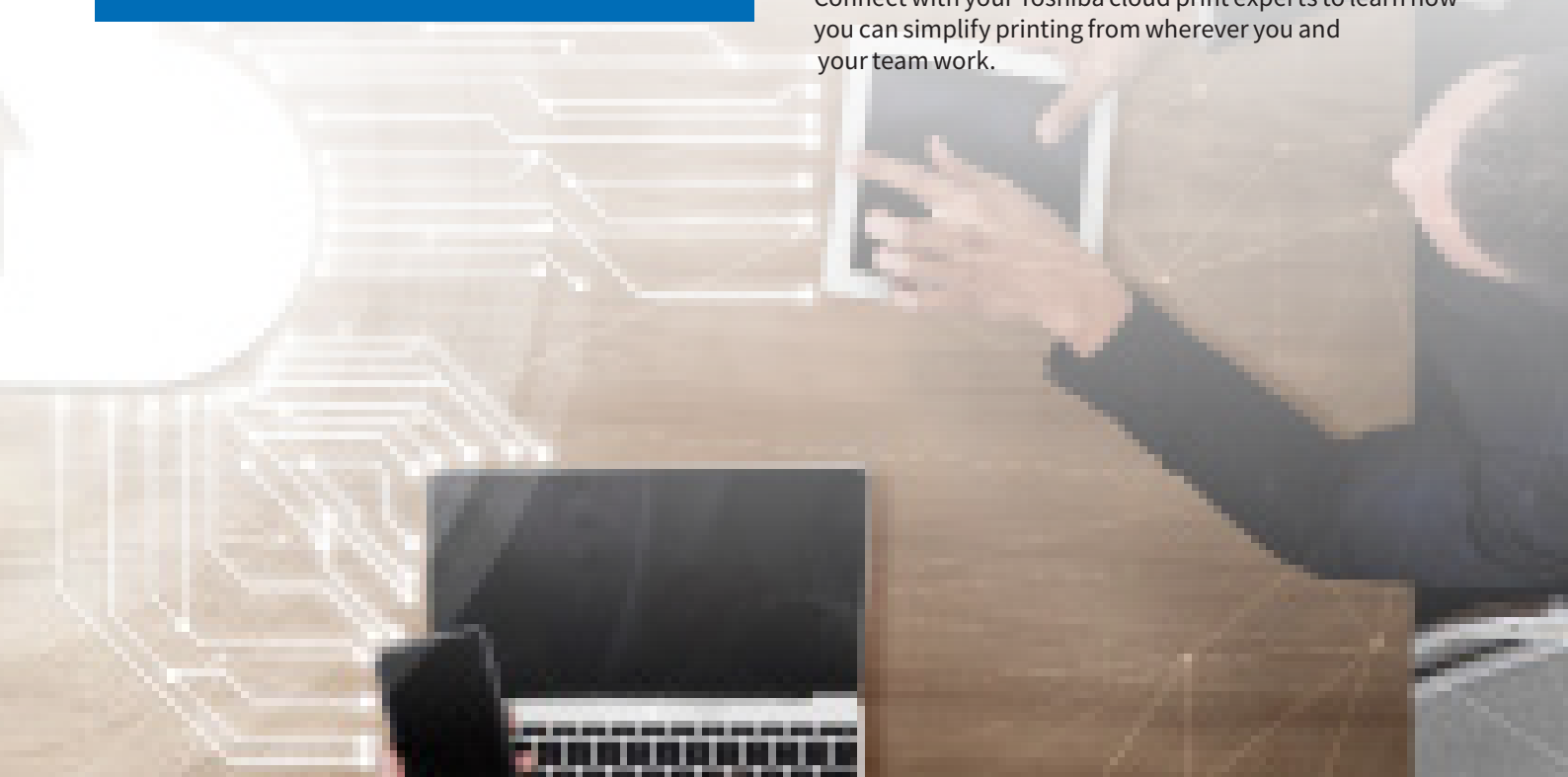
Environmental impact

Implementing cloud printing gives users more control over what they print and where, helping reduce abandoned printouts and eliminate paper waste.

Flexibility for the workplace

e-FOLLOW.cloud from Toshiba provides users the flexibility to print from any location and removes the need for complex print infrastructure. If you are looking to adopt a more flexible way of working, then cloud printing solutions are a valuable tool and can help you make significant savings and empower everyone across the business to better manage their print jobs.

Connect with your Toshiba cloud print experts to learn how you can simplify printing from wherever you and your team work.



About Toshiba Tec

Toshiba Tec Belgium Imaging Systems is part of the globally operating Toshiba Tec Corporation, active in various high-tech industrial sectors.

Toshiba Tec Corporation is a leading provider of information technology, operating across multiple industries - ranging from retail, education and business services to hospitality and manufacturing. With headquarters in Japan and over 70 subsidiaries worldwide, Toshiba Tec Corporation helps organisations transform the way they create, record, share, manage and display information.

For more information please contact us:

Toshiba Tec Belgium Imaging Systems

Z. 1. Researchpark 20
BE-1731 Asse-Zellik

Telephone +32 2 600 41 01
E-mail mfp.sales@toshibatec-tgis.com
Website be.toshibatec.eu

Innovation at your fingertips! –
Get the latest updates and expert
solutions on our website.

